



K-LA-DSP Series Active DSP-controlled Line Array Loudspeaker

K-LA-DSP Series Active DSP-controlled Line Array Loudspeaker is specifically designed for mid to mid-high level market.

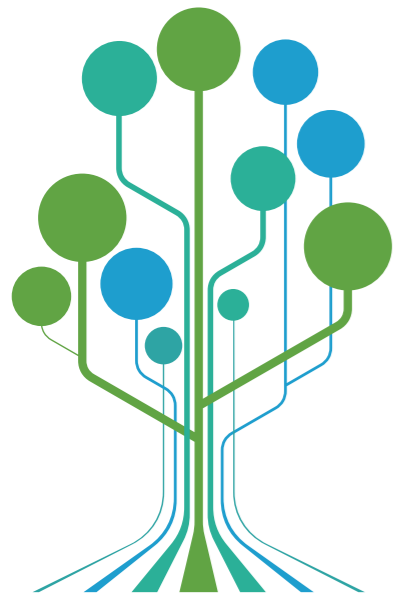
K-LA-DSP can be used in Applications like Live sound for rental application for small and mid-size venues, Permanent installation in theatres, houses of worship, convention centres, Portable PA, clubs, ballrooms, live theatres and almost anywhere else that people gather to enjoy music or hear the spoken word, are within the ability of the K-LA-DSP series to respond with acoustical perfection.

K-LA-DSP system is combined in modularization, which is suitable for various performance venues.

■ K-LA-DSP Series Specifications

SPECIFICATIONS		K-LA212-DSP	K-LA210-DSP	K-LA28-DSP	K-LA218-DSP	K-LA118-DSP	
Frequency Response(-10dB)		55Hz-20kHz	57Hz-20kHz	60Hz-20kHz	32Hz-150Hz	32Hz-150Hz	
Horizontal Coverage		90°	100°		/		
Vertical Coverage		Splay angle dependent				/	
Maximum Calculated SPL/1M	Continuous	129dB	127dB	122dB	134dB	131dB	
	Program	132dB	130dB	125dB	137dB	134dB	
	Peak	135dB	133dB	128dB	140dB	137dB	
Drivers	HF	Customized Neodymium driver,3" voice coil,1.4" exit	Customized driver, 3" voice coil,1.4" exit	Customized driver, 1.75" voice coil,1" exit	/		
	LF	Customized 2x12"driver, 3" voice coil	Customized 2x10"driver, 2.5" voice coil	Customized 2x8"driver, 2" voice coil	Customized 2x18"driver, 4" voice coil	Customized 1x18"driver, 4" voice coil	
DSP							
Processor		96kHz signal sampling frequency					
presets		/	Linear, HFX, W/SUB		80Hz, 100Hz, 120Hz		
AMPLIFIER							
Amplifier		Class D					
Power(RMS standards)		1600W		2800W	1600W		
Peak Power		3200W		5600W	3200W		
Frequency Response (1W 8Ω 2ch)		20Hz-20kHz(±0.5dB)					
Intermodulation Distortion (20Hz-20kHz, half power)		<0.05%					
Total Harmonic Distortion (20Hz-20kHz, Rated power 8Ω)		<0.05%					
Cooling		Cooling with fans					
Protection		DC protection, short circuit protection, overheat protection, input overload protection, output overload protection, soft startup protection, overvoltage protection, undervoltage protection					
Signal Input/Output Connectors		Female XLR input, male XLR output					
Power Input Connectors		Power connector					
Power Output Connectors		Power connector		/	Power connector		
AC Power Operating Range		100V~130V or 220V~240V (±10%,50/60Hz)					
Power consumption (1/8 output power)		176W	117W	82W	295W	149W	
CABINET							
Cabinet		Multilayer baltic birch plywood CNC made				CNC made of excellent wood	
Angle Adjustment		0°, 1°, 2°, 3°, 4°, 5°, 6°,7°, 8°, 9°,10°	0°,1°,2°,3°,4°, 6°,8°,10°	0°,2°,4°,6°,8°,10°	/	/	
Cabinet Color		Black is the default color. Contact Audiocenter for customization					
Grille		Iron mesh					
Handles		2 side,2 back	2 side	2 side	8 side	4 side	
Optional Accessories		Flightcase with 100mm wheels / Durable rain bag/ Frame for flying and ground stacking/Dolly					
Speaker Dimension(WxHxD)		899x344.5x647.5mm	742x302x695mm	590x236x500mm	1080x595x760mm	590x639x800mm	
Carton Dimensions (WxHxD)		1000x745x434mm	840x800x390mm	688x600x324mm	846x1186x681mm	724x906x675mm	
Net Weight		59.0kg	38.5kg	25.0kg	101.0kg	63.0kg	
Shipping Weight		63.0kg	42.0kg	26.0kg	105.0kg	69.0kg	
Technical Support and After-sales Service		Global application support team, EASE GLL files					

• All content subject to change without notice. All rights reserved. AC - K-LA-DSP - 202312



BrainCore™

BrainCore™ is an innovative core application technology researched and developed by Audiocenter, devoted to Audiocenter active DSP-controlled loudspeakers with supreme performance and high reliability.

With its advanced technology and scientific methodology, BrainCore™ analyses and processes the input signal, DSP module, Class D amplifier and loudspeaker optimally, achieving excellent frequency response and audio reproduction even at high levels of SPL.



Lunan International Exhibition Center

IMPORTANT FEATURES



Innovative BrainCore™ technology to improve the audio performance of the system

The innovative BrainCore™ technology and built-in powerful DSP processor improve the performance of the loudspeaker. With Cort™ correction technology and Limita™ processing technology, the system works with safety and reliability and achieves supreme performance.



Advanced Cooling System

Mould-opening customized heat sink with honeycomb structure enlarges the contact surface with air, and thus to improve the cooling efficiency.



Active Speaker DSP

K-LA-DSP is built with 3 different presets. Users can choose the presets according to their needs via the buttons on the back panel.



Sleep mode

To save power, the system will enter into sleep mode automatically if without signal input for 15 mins.



Customized ProDriver

Latest loudspeaker technology and customized driver ensure very clean and clear sound and impressive sound dynamic.



EASE GLL

We provide EASE GLL file for free.



Class D Amplifier

K-LA-DSP adopts customized Class D Amplifier together with switch mode power supply technology, which ensure the system for high efficiency, exquisite and compact outlook, advanced cooling effect and high quality.



Solid Wood Construction

Optimized and compact CNC cabinet made of Multilayer baltic birch plywood is solid, waterproof and light-weight, very suitable for touring application.



Wood Horn Material

The horn adopts Multilayer baltic birch plywood with seamless connection to ensure low resonance and optimized smooth frequency response.



Integrated Flyware

Integrated installation accessories built in the cabinet make K-LA-DSP in installation flexibility.



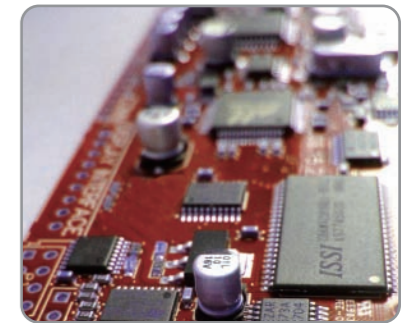
PTV Technology

PTV technology, by a connector installed between the driver and horn, improves the mutual interference of phase and uniformity of sound field.



Innovative BrainCore™ technology to improve the audio performance of the system

The innovative BrainCore™ technology and built-in powerful DSP processor improve the performance of the loudspeaker. With Cort™ correction technology and Limita™ processing technology, the system works with safety and reliability and achieves supreme performance.



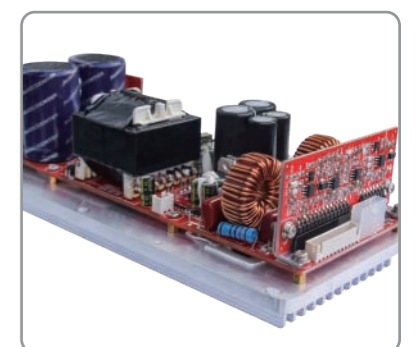
Active Speaker DSP

3 presets (Linear, HFX, W/SUB) in full range loudspeaker and 3 low-pass filters (80Hz, 100Hz, 120Hz) in subwoofer are available for the users to choose via the buttons on the back panel. USB port is not available for the users.



Class D Amplifier

K-LA-DSP adopts customized Class D Amplifier together with switch mode power supply technology, which ensures the system for high efficiency, exquisite and compact outlook, advanced cooling effect and high quality.



K-LA212-DSP

K-LA212-DSP is an active DSP-controlled line array loudspeaker. It can be compared to three-way systems for the sound performance, and with more compact size and lighter weight, K-LA212-DSP has more advantages for easier handling and transportation.

The K-LA212-DSP incorporates a novel phase corrector, which shifts the center of the loudspeakers closer to the center of the box. This same corrector optimizes the working frequency of the loudspeaker and the waveguides system of the horn, getting a sum of +6dB on the entire response band of the subwoofer. Create a two-way coaxial system capable of achieving a consistent response across the horizontal plane coverage. It is with high-performance, small size and light weight, which is suitable for both touring performance and fixed installations.

The HF drivers are two customized drivers with composite membrane (3" voice coil), and the LF drivers are two customized 12" drivers (3" voice coil).

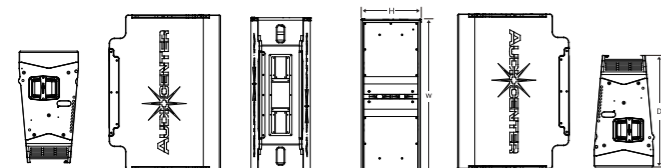
K-LA212-DSP system can be used as main PA sound reinforcement with 6 cabinets at least and 16 cabinets maximum per array.

K-LA212-DSP can be suspended vertically. The integrated hardware built-in to the cabinet with 12.0mm high intensity pins make installation easy and convenient. The system can be combined in modularization according to the coverage angle of place, which can meet the requirements of different applications. The installation of the system is very flexible and convenient. For those places where the system can not be flown, there are customized frames suitable for both flying and ground stacking (maximum 4 cabinets).



SPECIFICATION

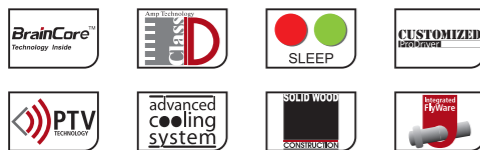
Type	Active DSP-controlled line array loudspeaker
Frequency Response(-10dB)	55Hz-20kHz
Horizontal Coverage	90°
Vertical Coverage	Splay angle dependent
Maximum Calculated SPL/1M(Continuous/Peak)	129dB/135dB
HF Driver	Customized Neodymium driver, 3.0" voice coil, 1.4" exit
LF Driver	Customized 2x12" driver, 3.0" voice coil
DSP	96kHz signal sampling frequency
Processor	96kHz signal sampling frequency
AMPLIFIER	
Amplifier Circuitry	Class D
Power(RMS standards)	1600W
Peak Power	3200W
Frequency Response (1W 8Ω 2ch)	20Hz-20kHz(±0.5dB)
Intermodulation Distortion	< 0.05%
Total Harmonic Distortion	< 0.05%
Cooling	Cooling with fans
Protection	DC protection, short circuit protection, overheat protection, input overload protection, output overload protection, soft startup protection, overvoltage protection, undervoltage protection
Signal Input	Female XLR
Signal Output	Male XLR
Power Input	Power connector
Power Output	Power connector
AC Power Operating Range	100V-130V~ or 220V-240V~(±10%,50/60Hz)
Power consumption (1/8 output power)	176W
CABINET	
Cabinet Material	Multilayer baltic birch plywood CNC made
Angle Adjustment	0°, 1°, 2°, 3°, 4°, 5°, 6°, 7°, 8°, 9°, 10°
Cabinet Color	Black is the default color. Contact Audiocenter for customization
Grille	Iron mesh
Handles	2 side, 2 back
Speaker Dimension(WxHxD)	899x344.5x647.5mm
Carton Dimensions (WxHxD)	1000x745x434mm
Net Weight	59.0kg
Shipping Weight	63.0kg



Dimension(WxHxD): 899x344.5x647.5mm

FEATURES

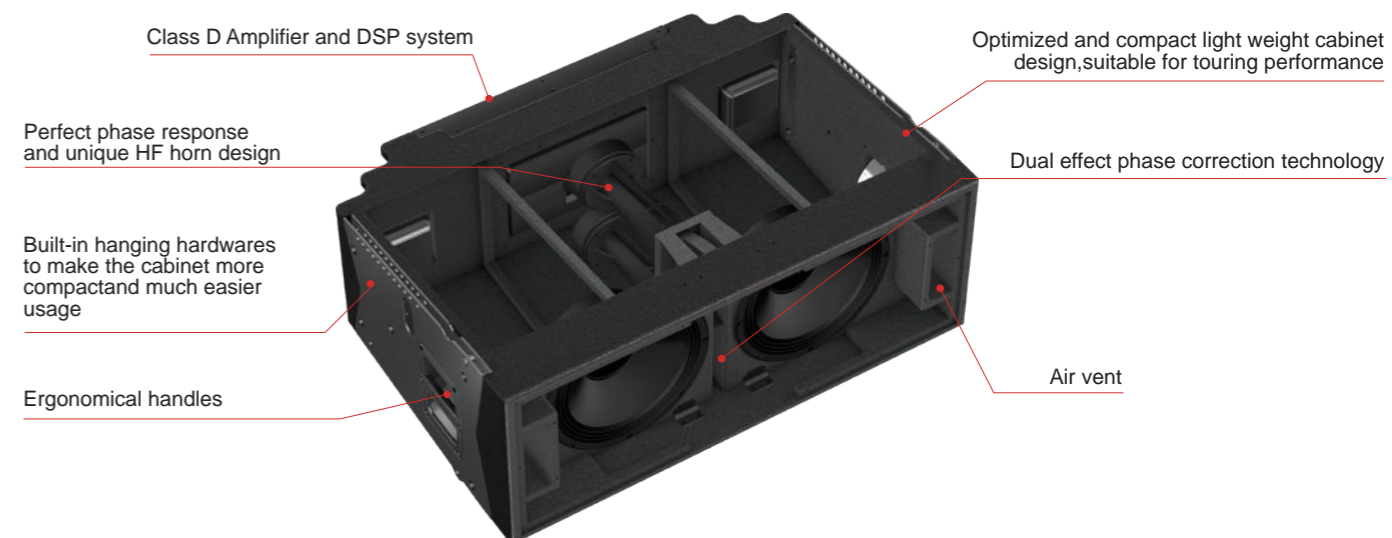
- Customized driver
- PTV HF horn ensures even coverage and optimized for smooth frequency response
- Dual phase plug design for an extremely precise dispersion
- Hi end digital controller on board (DSP) with 96kHz signal sampling frequency
- Sleep mode automatically if without signal input for 15mins
- Class D amplifier
- Advanced cooling system in the driver
- Optimized and compact elegant premium design cabinet
- Rock solid humidity free birch plywood CNC made cabinet
- Comprehensive accessories suitable for different applications



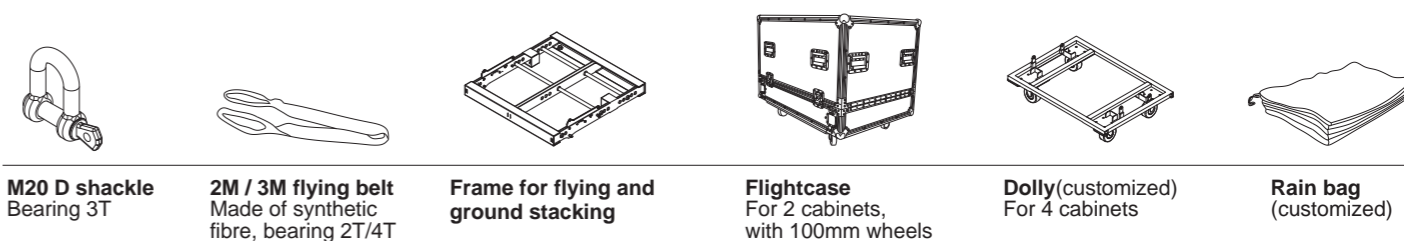
SYSTEM CONFIGURATION

K-LA-DSP, K-LA Series subwoofer

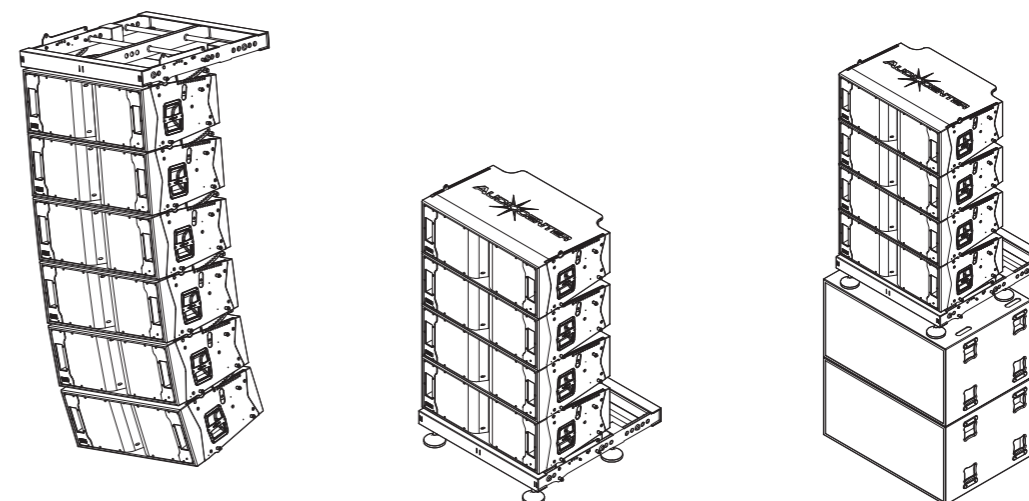
K-LA212-DSP PROFILE



ACCESSORIES



INSTALLATIONS



K-LA210-DSP

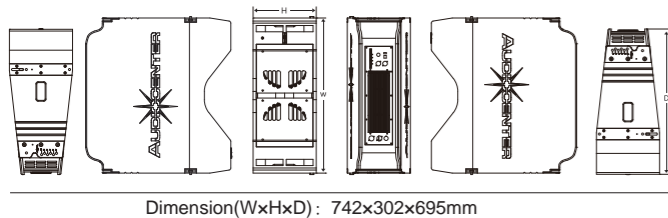
K-LA210-DSP, an active DSP-controlled line array loudspeaker, is designed for high requirements of touring performance, rental and fixed installation.

The HF driver of K-LA210-DSP is customized driver with composite membrane (3"voice coil), and the LF driver are two customized 10" drivers (2.5"voice coil).

User Selectable 3 presets (Linear, HFX, W/SUB) in K-LA210-DSP are available for the users to choose according to different environments and music styles.

K-LA210-DSP system can be used as main PA system with 6 cabinets minimum and 16 cabinets maximum per array.

K-LA210-DSP can be suspended vertically. The integrated hardware with innovative fast lock mechanics built-in to the cabinet with high intensity 9.5mm pins make installation easy and convenient. The system can be combined in modularization according to the coverage angle of place, which can meet the requirements of different applications. For those places where the system can not be flied, there are customized frames suitable for ground stacking (maximum 4 cabinets) to meet different requirements of installation and reinforcement environment.



Dimension(WxHxD): 742x302x695mm

FEATURES

- Customized driver
- PTV phase plug design for an extremely precise dispersion, HF horn design ensures even coverage and optimized for smooth frequency response
- Dual phase plug design for an extremely precise dispersion
- Hi end digital controller on board (DSP) with 96kHz signal sampling frequency
- Sleep mode automatically if without signal input for 15mins
- Class D amplifier
- Advanced cooling system in the driver
- Optimized and compact elegant premium design cabinet
- Rock solid humidity free birch plywood CNC made cabinet
- Comprehensive accessories suitable for different applications



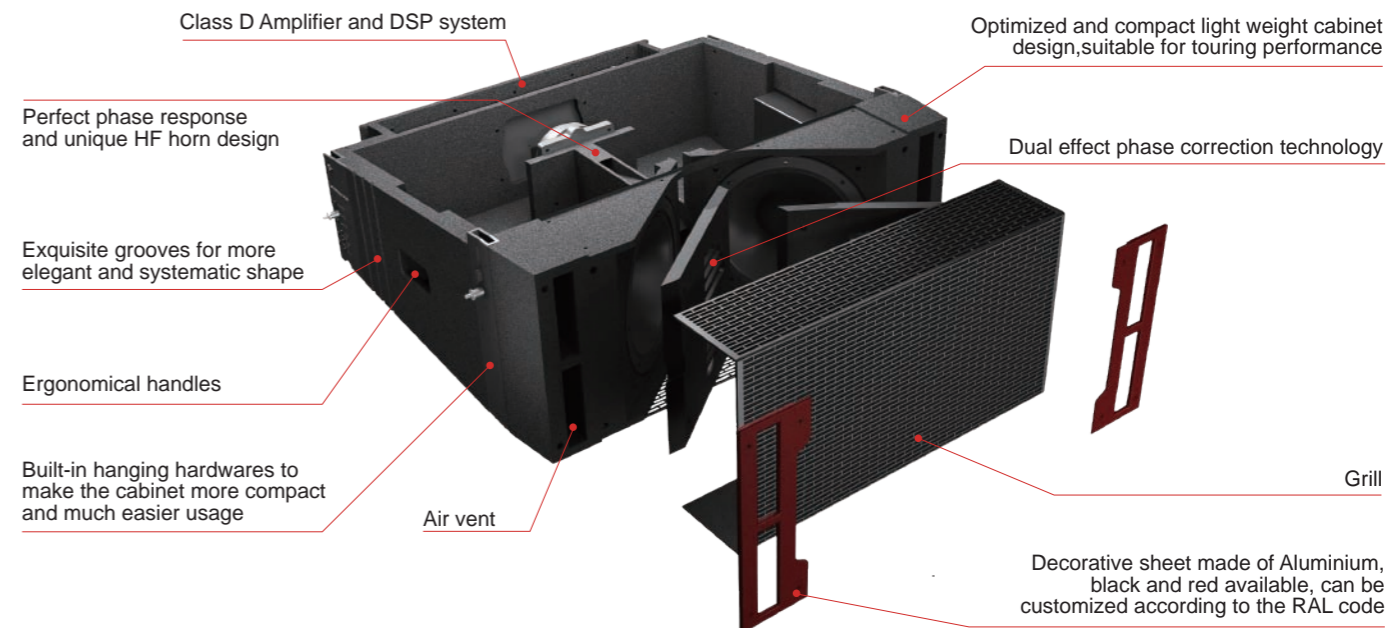
SYSTEM CONFIGURATION

- K-LA-DSP, K-LA Series subwoofer

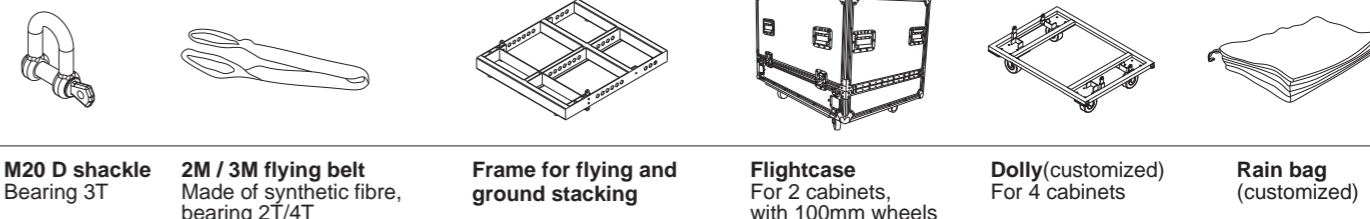
SPECIFICATION

Type	Active DSP-controlled line array loudspeaker
Frequency Response(-10dB)	57Hz-20kHz
Horizontal Coverage	100°
Vertical Coverage	Splay angle dependent
Maximum Calculated SPL/1M(Continuous/Peak)	127dB/133dB
HF Driver	Customized driver,3.0" voice coil,1.4" exit
LF Driver	Customized 2x10" driver, 2.5"voice coil
DSP	
Processor	96kHz signal sampling frequency
Presets	LINEAR,HFX,W/SUB
AMPLIFIER	
Amplifier Circuitry	Class D
Power(RMS standards)	1600W
Peak Power	3200W
Frequency Response (1W 8Ω 2ch)	20Hz-20kHz(±0.5dB)
Intermodulation Distortion	< 0.05%
Total Harmonic Distortion	< 0.05%
Cooling	Cooling with fans
Protection	DC protection, short circuit protection, overheat protection, input overload protection, output overload protection, soft startup protection, overvoltage protection, undervoltage protection
Signal Input	Female XLR
Signal Output	Male XLR
Power Input	Power connector
Power Output	Power connector
AC Power Operating Range	100V-130V~ or 220V-240V~(±10%,50/60Hz)
Power consumption (1/8 output power)	117W
CABINET	
Cabinet Material	Multilayer baltic birch plywood CNC made
Angle Adjustment	0°,1°,2°,3°,4°,6°,8°,10°
Cabinet Color	Black is the default color. Contact Audiocenter for customization
Grille	Iron mesh
Handles	2 side
Speaker Dimension(WxHxD)	742x302x695mm
Carton Dimensions (WxHxD)	840x800x390mm
Net Weight	38.5kg
Shipping Weight	42.0kg

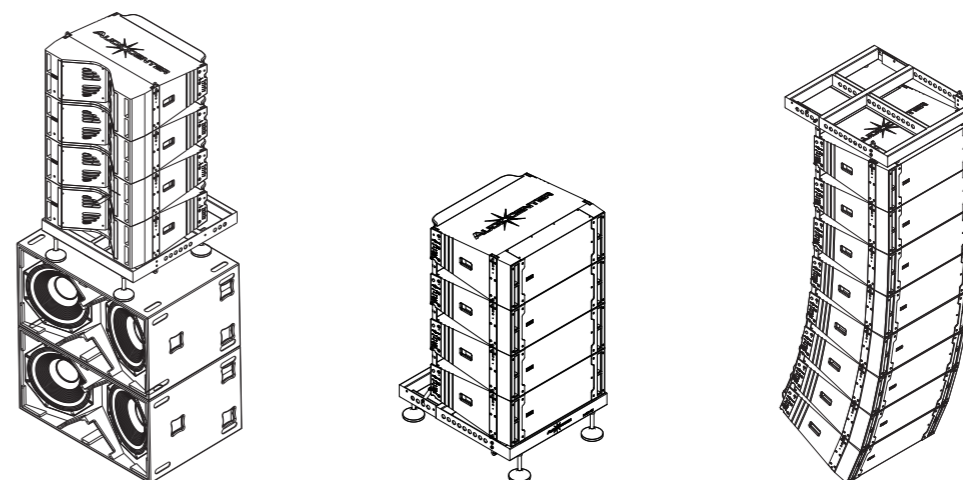
PROFILE



ACCESSORIES



INSTALLATIONS



K-LA28-DSP

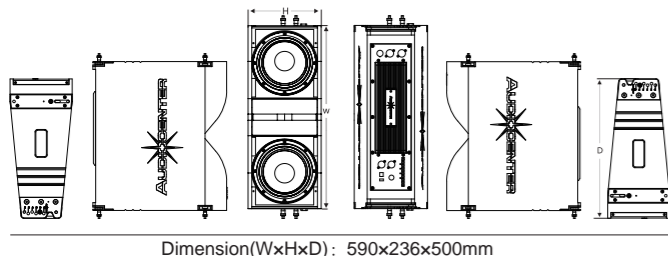
K-LA28-DSP is an active DSP-controlled line array loudspeaker, designed for high requirements of touring performance, rental and fixed installation.

The HF driver of K-LA28-DSP is customized driver with composite membrane (1.75" voice coil), and the LF driver is customized 8" driver (2" voice coil).

User Selectable 3 presets (Linear, HFX, W/SUB) in K-LA28-DSP are available for the users to choose according to different environments and music styles.

K-LA28-DSP system can be used as main PA sound reinforcement with 6 cabinets at least and 16 cabinets maximum per array.

K-LA28-DSP can be suspended vertically. The integrated hardware with innovative fast lock mechanics built-in to the cabinet with 9.5mm high intensity pins make installation easy and convenient. The system can be combined in modularization according to the coverage angle of place, which can meet the requirements of different applications. For those places where the system can not be flied, there are customized frames suitable for both ground stacking (maximum 4 cabinets) or stacking on the stand (maximum 2 cabinets) to meet different requirements of installation and reinforcement environment.



Dimension(WxHxD): 590x236x500mm

FEATURES

- Customized driver
- PTV phase plug design for an extremely precise dispersion, HF horn design ensures even coverage and optimized for smooth frequency response
- Hi end digital controller on board (DSP) with 96kHz signal sampling frequency
- Sleep mode automatically if without signal input for 15mins
- Class D amplifier
- Advanced cooling system in the driver
- Optimized and compact elegant premium design cabinet
- Rock solid humidity free birch plywood CNC made cabinet
- Comprehensive accessories suitable for different applications



SYSTEM CONFIGURATION

- K-LA-DSP Series subwoofer (K-LA28-DSP can be flied with K-LA118-DSP with same hanging frame.), K-LA Series subwoofer

SPECIFICATION

Type	Active DSP-controlled line array loudspeaker
Frequency Response(-10dB)	60Hz-20kHz
Horizontal Coverage	100°
Vertical Coverage	Splay angle dependent
Maximum Calculated SPL/1M(Continuous/Peak)	122dB/128dB
HF Driver	Customized driver,1.75" voice coil,1.0" exit
LF Driver	Customized 2x8" driver, 2.0"voice coil
DSP	
Processor	96kHz signal sampling frequency
Presets	LINEAR,HFX,W/SUB
AMPLIFIER	
Amplifier Circuitry	Class D
Power(RMS standards)	1600W
Peak Power	3200W
Frequency Response (1W 8Ω 2ch)	20Hz-20kHz(±0.5dB)
Intermodulation Distortion	< 0.05%
Total Harmonic Distortion	< 0.05%
Cooling	Cooling with fans
Protection	DC protection, short circuit protection, overheat protection, input overload protection, output overload protection, soft startup protection, overvoltage protection, undervoltage protection
Signal Input	Female XLR
Signal Output	Male XLR
Power Input	Power connector
Power Output	Power connector
AC Power Operating Range	100V-130V~ or 220V-240V~(±10%,50/60Hz)
Power consumption (1/8 output power)	82W
CABINET	
Cabinet Material	Multilayer baltic birch plywood CNC made
Angle Adjustment	0°,2°,4°,6°,8°,10°
Cabinet Color	Black is the default color. Contact Audiocenter for customization
Grille	Iron mesh
Handles	2 side
Speaker Dimension(WxHxD)	590x236x500mm
Carton Dimensions (WxHxD)	688x600x324mm
Net Weight	25.0kg
Shipping Weight	26.0kg

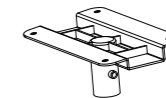
ACCESSORIES



M20 D shackle
Bearing 3T



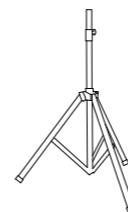
2M / 3M flying belt
Made of synthetic fibre,
bearing 2T/4T



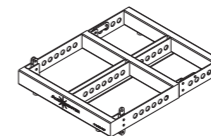
Bracket



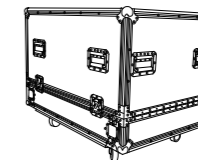
Rain bag(customized)



Three-foot stand
Bearing 80Kg

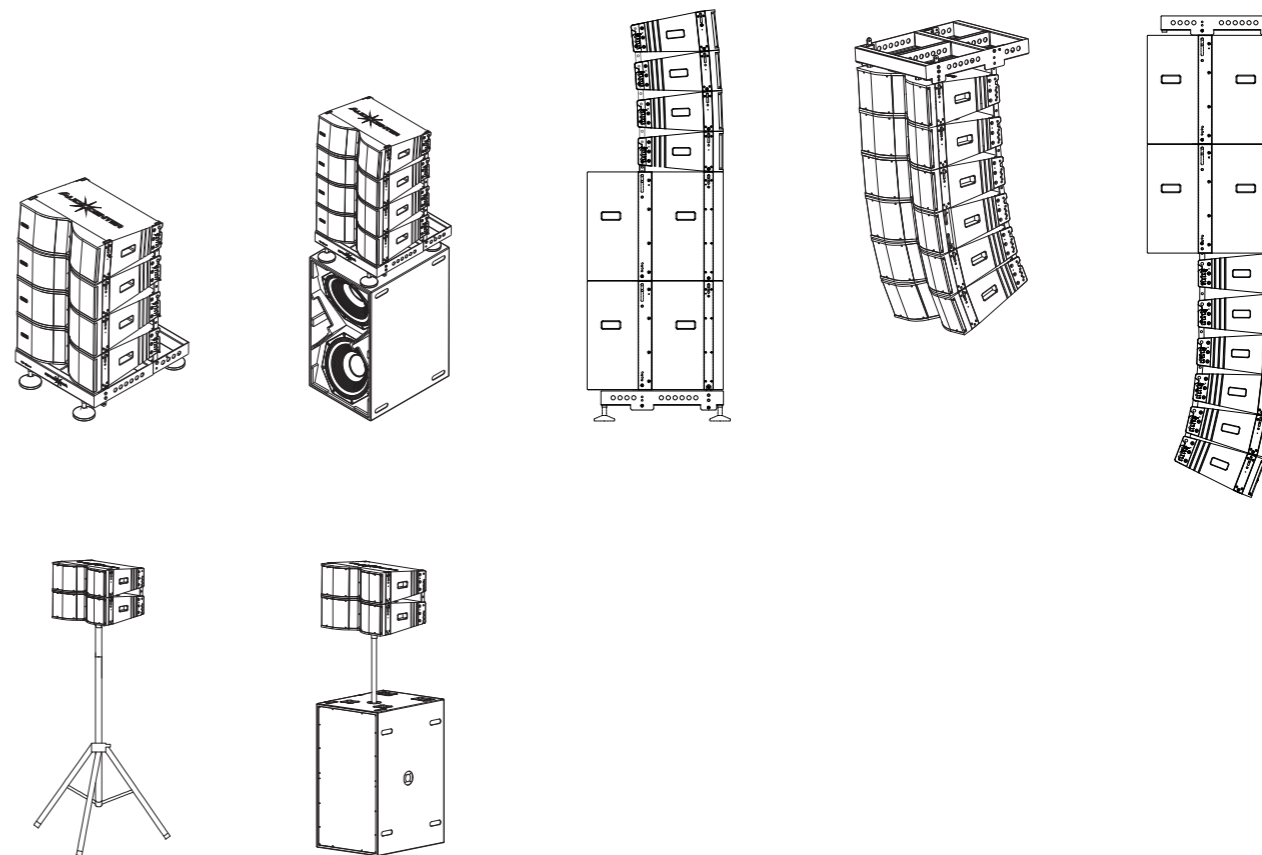


Frame for flying and
ground stacking



Flightcase(K-LA28)
For 2/4 cabinets,
with 100mm wheels

INSTALLATIONS



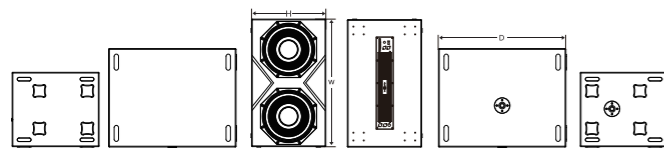
K-LA218-DSP

K-LA218-DSP, an active DSP-controlled Dual 18" subwoofer, is designed to meet the high requirements of touring performance, rental and fixed installation.

The LF drivers of K-LA218-DSP are two customized 18" drivers (4" voice coil).

User Selectable 3 low-pass filters (80Hz, 100Hz, 120Hz) in K-LA218-DSP are available for the users to choose according to different environments and music styles.

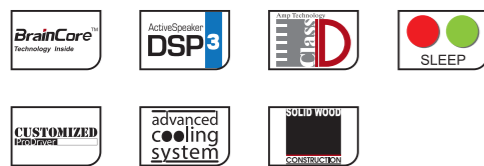
K-LA218-DSP is a perfect match for all Audiocenter full range loudspeakers, extending band width of frequency response and delivering powerful, impressive, punchy bass sound.



Dimension(WxHxD): 1080x595x760mm

FEATURES

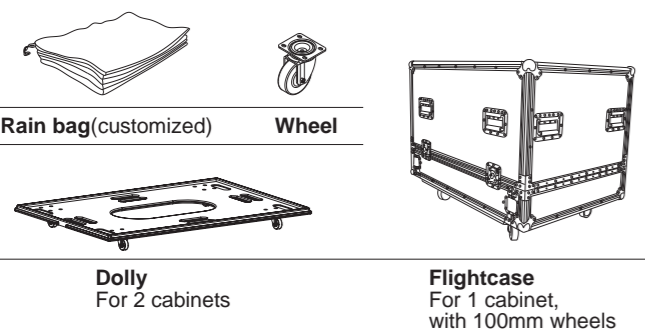
- Hi end digital controller on board (DSP) with 96kHz signal sampling frequency
- Sleep mode automatically if without signal input for 15mins
- Class D amplifier
- Advanced cooling system in the driver
- Rock solid humidity free birch plywood CNC made cabinet
- Durable polyurea coating
- Comprehensive accessories suitable for different applications



SYSTEM CONFIGURATION

K-LA, K-LA-DSP Series line array

ACCESSORIES



SPECIFICATION

Type	Active DSP-controlled subwoofer
Frequency Response(-10dB)	32Hz-150Hz
Maximum Calculated SPL/1M(Continuous/Peak)	134dB/140dB
LF Driver	Customized 2x18" driver, 4.0" voice coil
DSP	
Processor	96kHz signal sampling frequency
Presets	80Hz, 100Hz, 120Hz
AMPLIFIER	
Amplifier Circuitry	Class D
Power(RMS standards)	2800W
Peak Power	5600W
Frequency Response (1W 8Ω 2ch)	20Hz-20kHz(±0.5dB)
Intermodulation Distortion	< 0.05%
Total Harmonic Distortion	< 0.05%
Cooling	Cooling with fans
Protection	DC protection, short circuit protection, overheat protection, input overload protection, output overload protection, soft startup protection, overvoltage protection, undervoltage protection
Signal Input	Female XLR
Signal Output	Male XLR
Power Input	Power connector
Power Output	/
AC Power Operating Range	100V-130V~ or 220V-240V~(±10%,50/60Hz)
Power consumption (1/8 output power)	295W
CABINET	
Cabinet Material	Multilayer baltic birch plywood CNC made
Coating	Durable Polyurea Coating
Cabinet Color	Black is the default color. Contact Audiocenter for customization
Grille	Iron mesh
Handles	8 side
Pole Mount	M20 base Φ35mm
Speaker Dimension(WxHxD)	1080x595x760mm
Carton Dimensions (WxHxD)	846x1186x681mm
Net Weight	101.0kg
Shipping Weight	105.0kg

K-LA118-DSP

K-LA118-DSP, an active DSP-controlled subwoofer, is designed to meet the high requirements of touring performance, rental and fixed installation.

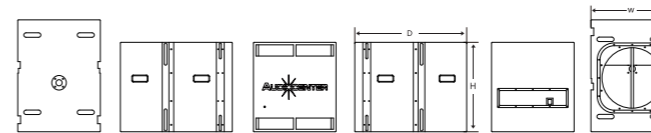
The LF driver of K-LA118-DSP is customized 18" driver (4" voice coil).

User Selectable 3 low-pass filters (80Hz, 100Hz, 120Hz) in K-LA118-DSP are available for the users to choose according to different environments and music styles.

K-LA118-DSP is a perfect match for all Audiocenter full range loudspeakers, extending band width of frequency response and delivering powerful, impressive, punchy bass sound.

The K-LA118-DSP is with half formula double opening design and dual LF output. With 6th order band pass filter function, the cabinet design of K-LA118-DSP can decrease HF interference and improve LF performance. K-LA118-DSP is novel and innovative product with high technology.

K-LA118-DSP is combined in modularization, which is suitable for any performance venues. It can also be used together with other loudspeakers of other brands.



Dimension(WxHxD): 590x639x800mm

FEATURES

- Hi end digital controller on board (DSP) with 96kHz signal sampling frequency
- Sleep mode automatically if without signal input for 15mins
- Class D amplifier
- Advanced cooling system in the driver
- CNC cabinet made of excellent wood
- Comprehensive accessories suitable for different applications



SYSTEM CONFIGURATION

- K-LA28-DSP, K-LA28-MA/SP full range loudspeaker

SPECIFICATION

Type	Active DSP-controlled subwoofer
Frequency Response(-10dB)	32Hz-150Hz
Maximum Calculated SPL/1M(Continuous/Peak)	131dB/137dB
LF Driver	Customized 1x18" driver, 4.0" voice coil
DSP	
Processor	96kHz signal sampling frequency
Presets	80Hz, 100Hz, 120Hz
AMPLIFIER	
Amplifier Circuitry	Class D
Power(RMS standards)	1600W
Peak Power	3200W
Frequency Response (1W 8Ω 2ch)	20Hz-20kHz(±0.5dB)
Intermodulation Distortion	< 0.05%
Total Harmonic Distortion	< 0.05%
Cooling	Cooling with fans
Protection	DC protection, short circuit protection, overheat protection, input overload protection, output overload protection, soft startup protection, overvoltage protection, undervoltage protection
Signal Input	Female XLR
Signal Output	Male XLR
Power Input	Power connector
Power Output	Power connector
AC Power Operating Range	100V-130V~ or 220V-240V~(±10%,50/60Hz)
Power consumption (1/8 output power)	149W
CABINET	
Cabinet Material	Multilayer baltic birch plywood CNC made
Cabinet Color	Black is the default color. Contact Audiocenter for customization
Grille	Iron mesh
Handles	4 side
Pole Mount	M20 base Φ35mm
Speaker Dimension(WxHxD)	590x639x800mm
Carton Dimensions (WxHxD)	724x906x675mm
Net Weight	63.0kg
Shipping Weight	69.0kg